



Company Profile

Registration Number: 2005/126995/23



Physical Address:
04 Albertina Sisulu Road
Florida
1703

Postal Address:
P.O.Box 6751
Cresta
2118

Contact Details

Contact Person: Moegamat
Nadeem Baker Tel: 010 597
6645/ 084 288 9138

Fax: 086 503 8312

[Email:Nazeer@mentako.co.za](mailto:Nazeer@mentako.co.za)
[/adam@mentako.co.za](mailto:adam@mentako.co.za)



Table Of Content

1.Introduction

1. Overview
2. Mission
3. Vision
4. Business Drivers
5. Values

2.Service Offerings

3.Professional Affiliations

4.Organisational Structure

5.Company Resources

6.Projects

7. Black Empowerment

1. Vision
2. Empowerment Policy
3. Employment Equity
- 7.4. Corporate Social Investment
- 7.5. SME Development

8. Business Details





1. INTRODUCTION



1. Overview

Mentako Trading Enterprises cc, established in 2005 in a wholly Black Owned and Managed Construction and Engineering Company based in Johannesburg. Our work is primarily based in the Gauteng region but we do undertake work country wide.

At Mentako, we believe that excellent project management skills are the key to successful contracts. Clients rightly demand the highest standards of craftsmanship, combined with minimum disruption to business whilst work is carried out. This often entails out of hours working, whether it be shift work, night work or shutdown work.

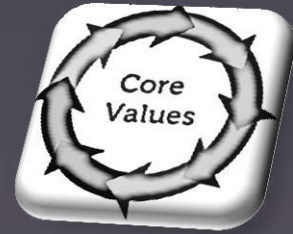
Mentako Trading Enterprises cc undertake all types of construction, but specialise in design and build, new build and extensions, maintenance and alteration of factories and facilities across all industries, as well as residential developments.

We have a highly experienced management team with over 20 Years of experience who are committed to exceeding client expectations at all times. Wherever possible we promote design and build, which enables us to retain control over the whole process from concept to completion, we are able to ensure that work is completed to brief and on time.

2. Mission

To honestly serve expeditiously and punctually by putting the interest of our clients first. We shall achieve the maximum returns and best success through:

- Providing our clients with superior construction projects on time, within budget whilst maintaining a very high standard of quality.
- Constantly striving to reduce our cost in order to maintain a value for money service.
- Developing our employees' skills and expertise so that they can enjoy fulfilment and rewards.
- Producing such returns on invested capital that will ensure the continued confidence and on-going support of our shareholders.
- Developing a relationship with our suppliers which will ensure that we that we, in turn, receive products and services which comply with our requirements.
- Participating actively and responsibly in the communities in which we serve, and striving constantly for harmonious and peaceful society which embraces freedom of association, Justice, dignity and equal opportunity for all.
 - Protecting the environment and natural resources.



1.3.Vision

Our vision is to become leaders in the industry through innovative practice and personal development of our staff, thus ensuring the continued service excellence that our clients have come to expect and enabling us to broaden our range of products and service offerings, and being constructive partners in our nation's economy.

1.4. Business Drivers

Mentako's business strategy is driven by the following objectives

- Be optionally active in business we invest in.
- Foster skills transfer at both management and technical levels.
- Empower communities through educational programmes.
- Maximise returns for investors and shareholders
- Value enhancing services.





Values

Our core VALUE system is driven by:

Building long term relationship based on mutual respect, integrity, honesty and fairness.
Creating value for stakeholders by ensuring that our investments are backed by sound financial principles.

Be results driven, efficient and professional in our operations and adhere to good corporate governance in all our dealings.

Commit social responsibility and environmental awareness programmes in communities we operate in.

Create a safe working environment for our employees.

Service Offerings

Mentako Trading Enterprises cc offers the following range of complementary Services:

Development Management:

This entails provision of development management consulting services to property developers and investors. Many property developers and investors do not have the technical expertise required to implement development projects. Mentako Trading Enterprises cc assists them in packaging and implementing these projects. The service providers, ranging from design consultants, marketers and financiers to main contractors and specialized subcontractors.

Turnkey Development:

This is very similar to the Development Management service but in this case Mentako Trading Enterprises cc would take on full development risk associated with the project. A development agreement is finalized between the property developer/investor and the turnkey developer to deliver a defined product within specified cost, quality and time parameters, delivering an agreed yield on the investment:





Contracting Services:

- Civil Works
 - Supply of PPE
 - Building
 - Maintenance
 - Plumbing
 - Electrical
 - Cleaning Services
 - Mechanical Engineering Services
 - Glass and Aluminium
 - Telecoms
 - Horticultural
- Supply of medical, laboratory and medical services

3. PROFESSIONAL AFFILIATIONS

Mentako Trading Enterprises cc is a registered member of the following associations



Reg No. 249330
Grade(s):
PE 8GB : 8CE 7ME: 7EP



NHBCRC Registration
Number:3000174128





4. ORGANISATIONAL STRUCTURE

Mentako Trading Enterprises cc makes use of highly qualified and well trained personnel with over 20 years construction and engineering Experience. Mentako Trading Enterprises cc believes in self-improvement and development programmes, and regularly sends staff on recognised training courses at the BIFSA and SAFCEC training colleges. Our staff are our major asset, their abilities and commitment to our vision of excellence is what makes Mentako Trading Enterprises cc the company that it is!

Moegamat
Nadeem
Baker (Ceo,
PDI)

Nazier has over 10 years' experience in the industry and is the operations of the Business since its inception

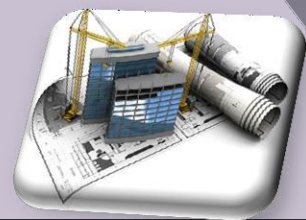
Jameel Pieterse
Contracts
Manger

Jameel Pieterse has over 15 years' experience in both public sector and international sector

THABO
MOKWENA
Senior Engineer

Skilled Workforce -30 (Male,PDI)

Semi-Skilled Workforce-15 (Female)





Moegamat
Nadeem Baker Chief
Executive Officer

Jameel Pieterse
Contracts Manager

Natasja Jones
New Business
Manger

Thabo Mokwena
Senior Manager

Tebogo Losaba
Project Director

Thando Mayimele
Programme Manager

Matthew Pillay
Programmes Manager

Rudi Bunger
Quantity Surveyor

Zoliswa Ntozoker
Head of Legal

Chester Chingude
Projects Manager





5. COMPANY RESOURCES

CRANE TRUCKS AND CHERRY PICKERS						
Isuzu F SERIES Heavy Load 4x4 8ton Fitted with a Heavy duty Crane	DZ84LNGP	ADMFR34H8G570 940		MENCV0006	C	1,050,000.00 20.00%
Toyota HINO SUPER F Heavy Load 8TON Cherry picker and Tool Bin 18.5metre height	FF08VFGP	AHHGD1JLP001015 28	2006	MENCV0005	C	720,000.00 20.00%
Isuzu F SERIES Heavy Load Fitted with Cherry Picker 13m height	FB34ZVGP	ADMFTS34L8G5715 13		MENCV0007	C	685,000.00 20.00%
15m3 TIPPER TRUCKS						
FAW CA SERIES	YGM328W	AAK3534FDGB0712 37	2018	MENCV0009	C	1,350,000.00 20.00%
FAW CA SERIES	YHW618W	AAK3534FDGB0611 82	2018	MENCV00010	C	1,350,000.00 20.00%
BAKKIES						
Nissan NP200 with canopy	DT72VCGP	ADNUSN1D5U0050 142		MENCV0004	C	130,000.00 20.00%
Toyota Hilux Double Cab	DS91YZGP	AHTFR22G2060984 37	2014	MENCV0003	C	215,000.00 20.00%
Toyota Hilux Longwheel base	BP12TKGP	AHTCW12G004036 861	2010	MENCV0002	C	182,000.00 20.00%
Nissan Hardbody NP300	YRC542GP	ADNK090000A0001 99	2013	MENCV0001	C	140,000.00 20.00%
Mazda BT50	DL78XJGP	AFBRXXMJ2R7M06 296	2013	MENCV0008	C	210,000.00 20.00%
ELECTRICIAN TOOL BOXES (560mm x 240mm x 230mm)AS PER CONTRACTS REQUIREMENT						
PER TOOLBOX:						
SVN160 Wire Strippers x5				MENTB0001		26,800.00 20.00%
226 Bacho Hacksaws x5				MENTB0002		68,940.00 20.00%
12PC Spanner set x5				MENTB0003		75,000.00 20.00%
Crimping Tool x5				MENTB0004		38,750.00 20.00%
Electrician Pillers x5				MENTB0005		18,550.00 20.00%
Long Nose Pillers x5				MENTB0006		23,420.00 20.00%
1000V Insulated water Pump x5				MENTB0007		48,550.00 20.00%
PC Screwdriver set (1000V Insulated) x5				MENTB0008		27,480.00 20.00%
Retractable Utility Knife and stripper x5				MENTB0009		13,650.00 20.00%
10Piece Allen key set x5				MENTB00010		9,500.00 20.00%
1000V Adjustable spanner x5				MENTB00011		29,480.00 20.00%
Cable Cutters x5 (cuts up to 60mm ²)				MENTB00012		27,550.00 20.00%
Cable Cutters x5 (cuts up to 120mm ²)				MENTB00013		35,220.00 20.00%
Cable Cutters x5 (cuts up to 300mm ²)				MENTB00014		41,760.00 20.00%
X 5 Fibre Glass Step-Ladders				MENTB00015 - 20	C	89,540.00 20.00%
X 5 Complete Electrician Toolboxes				MENTB00020 -25	C	375,000.00 20.00%
X5 Multimeters				MENTB00025 -30	C	81,547.00 20.00%
X5 Meggers 1000V				MENTB00030-35	C	155,320.00 20.00%
X2 Draw Vices & Come alongs				MENTB00036-38	C	39,458.00 20.00%
X5 11KVA Generators				MENTB00039-43	C	55,000.00 20.00%
X5 Sets of Floodlights				MENTB00044-49	C	6,300.00 20.00%



REST OF ASSET REGISTER						
COMMERCIAL VEHICLES						
Nisaan 2.7 diesel LDV			MENCV00011	C	300,000.00	20.00%
Colt 2.8Lit diesel LDV			MENCV00012	C	210,900.00	20.00%
Isuzu Watercard 10,000litres			MENCV00013	C	540,000.00	20.00%
PLANT, EQUIPMENT AND MACHINES						
Ditchwitch			MENPEM0001		366,540.00	20.00%
11KVA Generator			MENPEM0002		8,700.00	20.00%
11KVA Generator			MENPEM0003		8,700.00	20.00%
65KVA Generator			MENPEM0004	F	147,850.00	20.00%
Grader			MENPEM0005	F	655,000.00	20.00%
30 ton Excavator			MENPEM0006	F	1,040,000.00	20.00%
JCB TLB			MENPEM0007	C	485,360.00	20.00%
Water Pump			MENPEM0008	C	16,400.00	20.00%
Water Pump			MENPEM0009	C	16,400.00	20.00%
Water Pump			MENPEM00010	C	16,400.00	20.00%
Water Pump			MENPEM00011	C	16,400.00	20.00%
Electrical Crimper			MENPEM00012	C	57,000.00	20.00%
Electrical Crimper			MENPEM00013		57,000.00	20.00%
Concrete vibrating unit 38mm			MENPEM00014		48,690.00	20.00%
Concrete vibrating unit 38mm			MENPEM00015		48,690.00	20.00%
Concrete vibrating unit 38mm			MENPEM00016		48,690.00	20.00%
Inverter Welder			MENPEM00017	C	12,660.00	20.00%
Container 6m storgae			MENPEM00018	C	27,500.00	20.00%
Container 12m office sheds			MENPEM00019	C	33,485.00	20.00%
Mobile toilets			MENPEM00020	C	21,550.00	20.00%
Mobile toilets			MENPEM00021	F	21,550.00	20.00%
Welding machines 400AMP			MENPEM00022	C	17,540.00	20.00%
Water test pumps - 40bar			MENPEM00023	C	25,000.00	20.00%
ElectricalToolbox x6 @ R9000,00 each			MENPEM00024-30		450,000.00	20.00%
Testing Machine			MENPEM00031		110,000.00	20.00%
Cable Locator			MENPEM00032		39,660.00	20.00%
Drilling Machines x2 @ R31 500 each			MENPEM00033-34		63,000.00	20.00%
Wackers x14 @ R17 000 each			MENPEM00035-48		238,000.00	20.00%
Crimpers x2 @ R55,700			MENPEM00049-50		111,400.00	20.00%
Various Miscellaneous			MENPEM00051		45,000.00	20.00%
excavator bit			MENPEM00052		21,200.00	20.00%
Walk behind roller Smooth drum			MENPEM00053		55,000.00	20.00%
Walk behind roller Smooth drum			MENPEM00054		55,000.00	20.00%



6.PROJECTS

The management of Mentako Trading Enterprises cc has successfully provided a range of services and interacted at various levels of both large and medium sized organizations. Below is a short list of our various projects.

Maziya General Services cc

- | | |
|--|-----------------|
| • Construction of Substation General work | • R141.0Million |
| • 800Bed Jabulani Hospital (Inc Temp Pre-Fab Rooms and all windows glazing and installations) | • R32.5Million |
| • Construction of New Canada Police Station | • R160Million |
| • Reticulation of internal electrical works and distribution | • R42,6Mil |
| • Construction of New Canada Police Station | • R160Mil |
| • Refurbish and Upgrade of Sewage pump Station in Hermanus | • R2.6Mil |
| • Supply and delivery of low voltage services protective distribution Kiosks | • R48.1Mil |
| • Construction of New Ulundi Primary School | • R107,Mil |
| • Replacement of Transmission lines of kioski Substation | • R6.3 Mil |
| • Building of Prefabricated classrooms UFS | • R32.5Mil |
| • Surfacing of Internal Roads, Grass and landscaping at the Hospital and Gateway Clinic (Jabulani) | • R36.3Mil |
| • Construction of Ulwazi Primary School | • R47.6Mil |
| • Earthworks, Pipelaying of External Waterpipes for Rand Water | • R72Mil |
| • Construction of Moyisela Primary School For a period of 12 Months | • R72Mil |
| • Supply and installations of low water heaters | • R152Mil |
| • Building of various pre-fab Rooms as When | • R25.4Mil |
| • Riverlea Renewal project | • R140Mil |
| • Construction of Dunswart | • R152Mil |
| • Construction of New Geography and Physics Buiding | • R25.4Mil |
| | • R140Mil |
| | • R26.8Mil |
| | • R143.3Mil |
| | • R178.2 Mil |
| | • R10,3 Mil |



Maziya General Services cc

- | | |
|--|-------------|
| • The refurbishment of Riverlea | • R152Mil |
| • BRT Road and implement project for the City Of Johannesburg | • R25.4Mil |
| • Refurbishment and repairs to the cofimba Magistrate Office | • R140Mil |
| • Construction of Valve Chambers in Mondeor Power Park Reservoir | • R62,4Mil |
| • Refurbishment and Rehabilitation of Everest Primary School. | • R37.2Mil |
| • Supply and installation of low pressure. | • R3,7Mil |
| • Installation of new Streets Lights | • R1,5Mil |
| • Electrification of medium and low voltage infrastructure including public lighting | • R2,018 |
| • Electrical Work including room reticulation, Dc rectifiers, Radio cabinet installations and mains connection to supply authority Fencing and security Site | |
| • Maintenance of rail and OTHE infrastructure at Kololmela Mine | • R14,5 |
| • Installation of new street light and high mast lighting | • R9,6Mil |
| • Refurbishment and Rehabilitation of Everest Primary | • R900,597 |
| • Construction of Moyisela Primary School | • R47.25Mil |
| | • R19.3Mil |

Grokor Africa Holdings

- | | |
|---|--------------|
| • Fencing and earworks at various substations on behalf of ESKOM | • R8.0Mil |
| • Provision of civil Structural, Electrical, Architect and land surveyor service for construction work at various hospitals and locations | • R92,0Mil |
| • Construction of new Sekampaneng and Montana Feeder Pipeline | • R101,9Mil |
| • Upgrading of Water Reticulation in Bosmont | • R23,6Mil |
| • Development of Lufhereng –Bulk Water(Phase1) and Bulk Sewer | • R92,01Mil |
| • Malelane/Buffelspruit 132kV Line | • R92,012Mil |
| • Kieporal/Nwarele 132kV feederline | • R35,2mil |
| • Kieporal Substation Upgrade | • R20,6mil |
| • Electrification of Malelane House | • R20,6Mi |



StepHup Construction

- | | |
|--|---|
| <ul style="list-style-type: none"> • The development of a New showroom in Nigel (Including all Glass works) | <ul style="list-style-type: none"> • R5.8Mil |
|--|---|

Anix Trading 565

- | | |
|--|---|
| <ul style="list-style-type: none"> • The Building of 500 low cost Housing Units (Including all glass works) | <ul style="list-style-type: none"> • R,27Mil |
|--|---|

Department Of Public works and roads

- | | |
|---|---|
| <ul style="list-style-type: none"> • Routine Road Maintenance • Upgrading of Road D1726 (8km) | <ul style="list-style-type: none"> • R5.7Mil • R39.5Mil |
|---|---|

Supply and Delivery of Construction and building equipment and Materials

Supply and Delivery

Various

Easy Q
Jameel Pieterse
072 292 4330

-Routine Road Maintenance

R7.4Mil

-Rehabilitation of Hluluwe Primary School

R52.6Mil

NJR Projects (Pty) Ltd

-Turnkey Contractor: Emergency works National Water and Sanitation

R1.0Mil

-Ventilation of pumping station superstructures

R45.2Mil



Shadies Construction(Sub)	-Department of public works construction of <u>Duduza Police Station</u>	R 2.5Mil
	-Construction of Mayats Car Sales	R7.0Mil

Limanetix (Sub) K Martin 063 169 0003	-Construction of 4 Houses in Heidelberg	R2.18Mil
	-Upgrading of Dickson Park	-R64.5mil
	-Kempton Park Project	R3.4Mil
	-Upgrade and rehabilitation of the existing <u>Deka water pump Station</u>	R2,9Mil
	-Ancillary Works to replace water pumps and <u>controls</u>	R65.9Mil
	-Emergency flow relief provisions In Mogale <u>City</u>	R4.2Mil
	-Installations of new street lights	R65.9Mil
-Planning and executing operating and barricading on HV/MV/LV networks to ensure <u>safe working sites</u>		
-Restoration of Mechanical electrical works for <u>75ml/day to the inyaka water treatment Works</u>	R6.2Mil	



G5 Group (Pty) Ltd

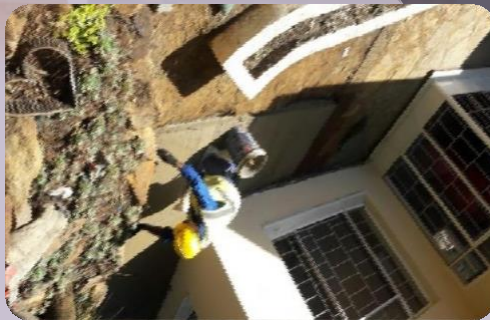
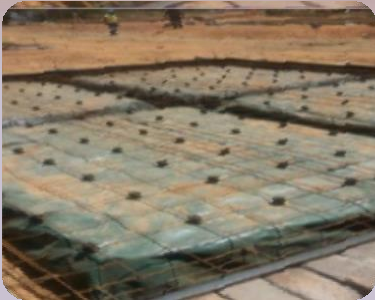
Angelique Moodley
angelique@g5-group.co.za
 011 907 0068

- Design, Construction and refurbishment of 700 houses in Oriezlek
- Design and Construction of AngloGold Health Services Hospital
- Construction and outfall sewers to the Polokwane Regional Wastewater Treatment Works (Phase 1A Seshego to East of Pi...

R99,456,986,37

R153,781,421.82

R198,243,113.23





<p>World Focus Projects Tel: 018 381 386 3863 Info@worldfocusprojects.co.za</p>	<ul style="list-style-type: none"> • Building of 80 wall plates at Pella Village: Moses Kotane Local Municipalities 	<ul style="list-style-type: none"> • R15,000.000
--	--	---

<p>INKANYELI PROJECTS (PTY)LTD 011 781 7774/7767 info@inkanyelu.co.za</p>	<ul style="list-style-type: none"> • Construction of 3 blocks consisting of 64 units at Jablunai Manor • Construction of Top Structure Social Housing –K311 • Construction of Top RDP-K0401 • Construction of Top Structure RDP –K0360 	<ul style="list-style-type: none"> R14,080Mil R8,400 Mil R4,320Mil R23,500Mil
---	--	---

<p>NJR PROJECTS Tel: 011 907 4718 lerato@njrprojects.co.za</p>	<ul style="list-style-type: none"> • Completion For Construction of 150 Low Cost Housing (Mmatshepe Village) Mafikeng • Completion for Construction of 100 Low Cost Housing Freedom Square Kliptown • Completion for Installation of sewer Infrastructure and installation Water Infrastructure • Appointment for construction of Raft Foundations, Tops Structure, Roofs and Finishes • Construction of 478m2 Multi Storey Building with Classrooms, mechanical works in auditorium, admin offices and ablution blocks 	<ul style="list-style-type: none"> R4,275 Mil R5,2Mil R21,0Mil R3,150Mil R76,382,912.38
--	--	--



CURRENT PROJECTS

Project	Nature Of Contract
CITY POWER HDA	METER AUDITS THE APPOINTMENT OF A CONTRACTOR FOR THE CONSTRUCTION OF WATER, SEWER, ROADS AND STORMWATER NETWORKS IN ZANDSPRUIT EXT 84 (PHASE 2
MAJUBA COLLEGE	Gas Compliance Project

City of Ekurhuleni

A-WS 02-2023: THE APPOINTMENT OF CONTRACTORS FOR THE INSTALLATION, REPLACEMENT, REPAIRS AND MAINTENANCE OF WATER METERS IN THE CITY OF EKURHULENI, ON AS AND WHEN REQUIRED BASIS WITH EFFECT FROM DATE OF AWARD UNTIL 30 JUNE 2026.





7. RECENTLY COMPLETED JOBS

Dept. Of Public Works
Mentako/Shadies
Duduza Police Station
Value: R2.5 Mil



Mayats Car Sales
Shadies Construction
12 New Workshops
Value: R7Mil



Heidelberg
Limanetix/Mentako
4 Houses
Value: R2.18 Mil





KEMPTON PARK PROJECT
VALUE: R3.4 Mil

Cleaning of Canals and Concrete Repairing
Value 3.6Mil





Civil Works and Construction





Current Projects



TRANSNET UNBLOCKING OF DRAINS





7. BLACK ECONOMIC EMPOWERMENT

1. Vision

To remain a Black Owned and Managed Company with innovative construction capabilities that is continuously engaging in scaling and developing skills in South Africa.

2. Empowerment policy

Mentako Trading Enterprises cc will continue to implement at all levels of the organisation to achieve the following objectives:

- To a majority black owned and managed;
- Endeavour to ensure that sexist and racism practices are eliminated; and
- Create support structures and mentorship programmes for young black women and men in technical and business area.

7.3. Employment Equity

Mentako Trading Enterprises cc takes employment equity seriously. The company is owned by one individual as outlined below:

Partner/ Director	Demographic breakdown of management	Gender	Equity Ownership/shareholding
MOEGAMAT NADEEM BAKER	SA Black	Male	100%

7.4. Corporate Social Investment

At Mentako Trading Enterprises cc, we believe that it is important to give back to the communities in which we do business. Mentako has made a number of contributions and donations to charitable and non-governmental organizations as part of its Corporate Social Investment programme.

Some of the most recent and significant initiatives are listed below:

The Establishment of Cyrildene community MASJID:

Provided labour, tools and equipment to the value R350,000.007.5. SME Development

Sponsorship to AC Milan Soccer Team:

Approximately R2, 800.00 per month is spent on this sports club for admin fees, transport, players kit, prizes, etc.

7.5. SME Developemnet

In selecting business partners and suppliers, we give preference to empowered companies as well as Small, Meduim and Micro Enterprises (SMME's). Ownership, control, skills transfer and equity represent the core areas against which supplies are measured



8. COMPANY DETAILS

Registered Name	Mentako Trading Enterprises cc
Registration Number	2005/126995/23
Vat Registration Number	4410258216
Income Tax Reference Number	9146109161
CIDB Registration Number	249330
NHBRC Registration Number	3000174128
Banking Details •BUSINESS DETAILS	FNB Northcliff Acc No: 62522707944 Branch Code: 253-705
Principal Business	Construction, Building, Renovations, Plumbing, Electrical,Painting, Civil
Physical Address	No.4 Albertina Sisulu Florida 1703
Postal Address	P.O.Box 6751 Cresta 2118
Telephone	010 597 6645
Cell	084 288 9138
Fax	086 503 8312
Email	nazeer@mentako.co.za ; adam@mentako.co.za ; tenders@mentako.co.za



**Thank you for taking the time to go through our profile.
If there are any questions or comments, please feel free
to contact us& follow us on Facebook / Twitter.**